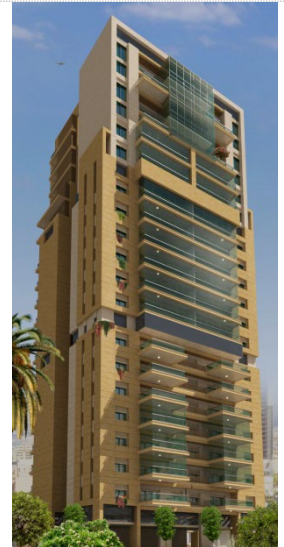




BEPCO

Engineer Gebran Y. Boueri



Owner Background



Name : Gebran Youssef Boueri

Nationality : Lebanese

Education : Consultant Engineering | ESIB 1985.

MBAIP | USJ, Paris 1 Panthéon - Sorbonne & Dauphine Universités

MAPS | Medical Architecture Planning System - Hospital Planning & Design

Nominations : **Consultant Engineer**

Expert & Arbitrator

Languages : Arabic, French, English.

Company : **BEPCO** [Boueri Engineering Planning & Consulting Office]

Owner – General Manager

NuDAWN Facilities Management LLC

Managing Partner

PLCI [Power Link Capital Investment]

Managing Partner

Office Phones : +961 4 724 240

+961 4 724 241

Cell Phones : Lebanon : +961 3 254 452 [WhatsApp]

Egypt : +20 120 21 20 20 9

Uganda : +256 743 11 22 22

UAE : +971 56 556 30 40

E-Mails : Management@bepco-lb.com

Web Sites : www.bepco-lb.com

www.nudawn.net

www.plci-int.com

BEPCO History

BEPCO is a Lebanese Medium-Size Consultancy Office with an International Vision.

BEPCO is an acronym for **B**oueri **E**ngineering **P**lanning and **C**onsulting **O**ffices, and stands for Quality, Commitment, and Client Satisfaction.

Over the last 34 years, we have designed, supervised, and followed the complete execution of more than 210 Projects. We pride ourselves on being design oriented, and our projects are categorized by challenge and not only by construction value.

It is as such that we have tackled projects with modest & high budgets.

Our portfolio encompasses multiple projects in Lebanon and abroad.

In particular, we have great experience in the design of Villas, Restaurants, Offices, Habitations, Health Care, Hotels, etc.

Throughout our frequent travels, we have always kept a close contact with the latest developments in the fields of architecture, engineering, and sustainable development in the design and construction technology.

BEPCO Added Value

Our team is committed in providing each of our customers with a unique construction experience.

We implement in your design your own thoughts and do our best to realize your greatest dreams.

We wisely explore a variety of design concepts or graphics that leave no room at risk by using the most advanced software in the engineering industry. We transform your ideas into realistic images so you can experiment with the design before you do the construction work.

BEPCO Experience

Through years of experience, we are now able to deliver and deliver high-quality projects at lower cost, as well as sustainable building solutions.

This is through a permanent partnership between us and all of our customers, built on experience and trust, and has become stronger over the years.

BEPCO Team

Our team of Architects, Civil Engineers, Electrical Engineers, Mechanical Engineers, Interior Designers, Quantity Surveyors, and Project Managers is equipped with a Strong Educational and Experimental Background.

The efficiency of our Team Members comes from the teamwork spirit working under the title of ***"Teamwork Divides the Task and Multiple the Success."***

BEPCO Services

Engineering Master Plan Services:

- Roads
- Sewerage
- Irrigation
- Power Mv & Lv
- Telecommunication
- Storm Water
- Water Supply
- Fire Fighting
- Low Current
- Street Lighting

Engineering Architectural Design Services:

- Conceptual Design.
- Feasibility Studies (Technical and Economic)
- Architectural & Engineering Design & Evaluation.
- Sustainable Design & Green Building
- Project Cost Estimation
- Environmental Studies, Master Planning & Urban Design
- Feasibility, Legal, Social and Economic Studies
- Value Engineering & Yield Improvement

Engineering Structural Design Services:

- Structural Design & Consultancy For New Buildings and Structures
- Structural Addition & Modification Design for Existing Buildings & Structures
- Structural Design & Consultancy For Civil Engineering Projects
- Structural Assessment & Rehabilitation Design For Existing Buildings & Structures

Engineering Electromechanical Design Services:

- Air conditioning: DX ,VRV, Chilled Water Systems.
- VAC Duct Work.
- Heating & Floor Heating.
- Electrical Installation, Wiring Cabling & lighting Fixture.
- LV Switch Boards .
- EIB & Dimming System.
- Provision of Technical Backup.
- IP PABX systems.
- Pumping Stations.
- Fire Alarms / Anti-Theft Systems / Solar Systems.
- Firefighting Systems and Piping.
- Plumbing – Sanitary.
- Lighting Control and Central Battery Systems.
- Generators and UPS.
- Controlling, Monitoring and BMS.
- CCTV Systems.
- Metering System Management.
- Ventilation Systems.

Engineering Management Services:

- Turn-key Project Execution
- Engineering Supervision for all types of Projects
- Construction Cost Control
- Management for all types of Project

Engineering Geotechnical Design Services:

- Desk and Field Studies of sites.
- Technical Studies of Foundations and Retaining Structures
- Studies Related to the Management of Groundwater and Aquifers.
- Specifications, Tender Documentation, Contract Recommendations.
- In Situ Field Tests - Laboratory Testing
- Costs on Recommended Forms of Construction or Remedial Works.
- Assessment of Slope Stability Issues.
- Value Engineering, Minimizing of Risks and Costs.

Engineering Technical Support Services:

- Bidding Documents Preparation for Owners.
- Tender Document Preparation for Contractors.
- Preparation of Contract Documents
- Quality Control
- Construction Management
- Cost Control
- Preliminary Design Preparation for Tenders.
- Project Management
- Contracts Management
- Claims and Variations
- Construction Supervision
- Quantity Surveying

Contractors' Support Services:

- Shop Drawing Preparation when necessary through coordination between Site Team and Office Team.
- Technical Document Preparation (Submittal, Transmittals, Method Statements, Quality Control Requirements....)

BEPKO Departments

- Master Planning & Urban Design
- Architectural
- Structural
- Estimation, Planning & Quantity Survey EPQS
- Management
- Roads & Infrastructures
- Electromechanical
- Interior Design & Decoration
- Technical & Execution

BEPKO Collaborators

- **PUD Engineers** "Planning & Urban Development"
- **BET-RM** "Structural Design Experts"
- **ETEC** Etude Technique
- **ZEM** "Experts in Mechanical Design"
- **Semm Group** "Infrastructure & Roads Design"
- **J.S. Consultant** "Geotechnical Expert"
- **AECO-Unetec** "Supervision of Public Works"
- **EWZ** "Experts in Electrical Design"

BEPCO Projects

BEPCO's projects are diverse and spread over several sector.

1	Master Planning	6	Projects
2	Commercial Complex	15	Projects
3	Hotels & Resorts	8	Projects
4	Hospitals	4	Projects
5	Offices Buildings	9	Projects
6	Residential Complexes	14	Projects
7	Factories	7	Projects
8	Private Villas	22	Projects
9	Residential Buildings	35	Projects
10	Churches	7	Projects
11	Public Spaces	4	Projects
12	Oil Tanks & Oil Stations	3	Projects
13	Miscellaneous Projects	7	Projects
14	Food & Beverage	74	Projects

215 Projects

Note: In the following projects description, the Projects in Gray (28 Projects) are partially studied projects, or executed by us. The remaining Projects (187 Projects) are totally studied, or executed by us.

BEPCO's partnership collaboration in Master Planning & Infrastructure Projects with **PUD & SEEM Group**. *(Highlighted in Dark Gray)*

1	Master Plan Development	15	Projects
2	Residential, Offices & Public Building	3	Projects
3	Residential Villas	5	Projects
4	Lands Reclamation	1	Project
5	Beach Resort	1	Project
6	Urban Development & Landscape Design	3	Projects
7	Village compounds	1	Project

PUD 29 Projects

1	Projects Director / Design Management & Supervision For Master Plan	13	Projects
2	Technical / Design Manager & Team Leader For Master Plan	11	Projects
3	Technical / Design Manager & Team Leader For Roads	1	Project
4	Technical / Design Manager & Team Leader For Sewerage	2	Projects
5	Technical / Design Manager & Team Leader For Building	3	Projects
6	Project Manager / Deputy PM (Design) For Master Plan	14	Projects
7	Project Manager / Deputy PM (Design) For Sewerage	5	Projects

SEEM Group 49 Projects

BEPKO's partnership collaboration in Master Planning & Infrastructure Projects with **RM & MME Group**. *(Highlighted in Dark Gray)*

1	Full Structural Design - Bank	4	Projects
2	Full Structural Design - Commercial	5	Projects
3	Full Structural Design - Educational	6	Project
4	Full Structural Design - High Rise	20	Projects
5	Full Structural Design - Hotel	3	Projects
6	Full Structural Design - Industrial	2	Projects
7	Full Structural Design - Leisure	1	Projects
8	Full Structural Design - Lodging	6	Projects
9	Full Structural Design - Mall	3	Projects
10	Full Structural Design - Office Building	12	Projects
11	Full Structural Design - Residential Building	23	Projects
12	Full Structural Design - Restaurant	2	Projects
13	Full Structural Design - Showroom	7	Projects
14	Full Structural Design - Villa	10	Projects

RM Group 104 Projects

BEPKO's partnership collaboration in Master Planning & Infrastructure Projects with **JS Consultant Group**. *(Highlighted in Dark Gray)*

1	Geotechnical Design - Foch Parking - Solidère – Beirut, Lebanon. Diaphragm wall, anchors, plug grout, pumping, mat found., micro-piles	1	Project
2	Geotechnical Design - Beirut Garden - Solidère – Beirut, Lebanon. Piles retaining wall, nails, anchors, mat foundation associated to piles.	1	Project
3	Geotechnical Design - Chabrouh Dam - Faraya – Keserwan - Lebanon. Soil and material laboratory testing. Supervision of the works.	1	Project
4	Geotechnical Design - Presidential Palace - Yamoussoukro, Ivory Coast 3500 micro-piles in heterogeneous and various soil - 250 to 350 mm	1	Project
5	Geotechnical Design - Parking Avenue Carnot - Paris 17ème, France Schotcrete, nails, more than 13 m of excavation	1	Project
6	Geotechnical Design - Headquarter of RATP - Paris 12ème, France. Diaphragm wall, anchors, plug grout and underpinning	1	Project
7	Geotechnical Design - Patio Palace - Menton, France Retaining structure wall associated to the micro-piles, anchors, struts and more than 30 m of excavation.	1	Project
8	Geotechnical Design - Headquarter of Rolex Company - Geneva, Switzerland Diaphragm wall, struts, pumping and associated civil works.	1	Project

JS Consultant Group 8 Projects

BEPKO's collaboration in Miscellaneous Projects with **ETEC**. *(Highlighted in Dark Gray)*

Engineering Design & Consultancy – Project Management & Development

Lebanon | North Meten | Jal-El-Dib | Main Exit Road | Mar Aabda Street | Gebara Building | 7th Floor

Cell: +961 3 254 452 | +20 120 21 20 20 9 | +256 743 11 22 22 | +971 56 556 30 40

Tel: +961 4 740 240 | +961 4 724 241 - Mail: management@bepco-lb.com | Web: www.bepco-lb.com

Hospital Projects
Commercial, Residential & Offices
Palaces & Private Residences
Hotels & Resorts
Educational, Cultural & Religious
Hospitals & Health
Governmental & Military
Urban Planning & Infrastructure
Transportation & Bridges
Industrial
Metallic Construction
Power & Telecommunication
Water, Rivers & Sea Structures
Surveys & Feasibilities

ETEC Etude Technique

BEPCO's collaboration in Miscellaneous Projects with **AECO-Unetec**. *(Highlighted in Dark Gray)*

Infrastructures
 Water Supply & Distribution
 Irrigation Networks
 Dams
 Airports
 Port Development
Architectural and Civil Engineering
Building Services
Industrial Facilities
Supervision, Project Management & Quantity Surveying
Planning
Environmental Studies
Project Management
Project Financing

AECO-Unetec

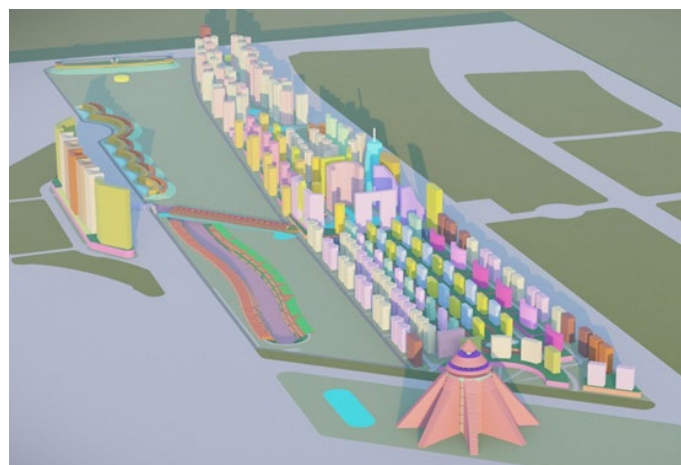
Diamond City Mega Project - Egypt

After Two years of Planning, Studying and Negotiations, we signed, in collaboration with **AWWC** [Alliance World Wide Consortium] and **SCC** [Smart Construction & Urban Development Company – Egypt], a Pre-Partnership Agreement with **ACUD** [Administrative Capital for Urban Development] for The development of the **Diamond City Mega Project** in The **NAC** [New Administrative Capital] – Cairo – Egypt.

The Diamond Business Center district is located in the heart off the City, at a major crossroads between the Green River and the extension Of Al-Istiklal Road that extends from thee presidential palace to the embassy district.

The planned community of The **Diamond City** is an innovative urban district that will become a leading example of mixed-use, sustainable planning, and design in **Egypt**. Based on the research of livable cities and environments around the world, this area is designed to provide over than 150,000 residents, workers, and visitors a wide variety of settings for daily life. The plan is structured by an ecological response to the beautiful landscape setting with an array of parks, squares, and civic spaces. With over than 6,500,000 m² of development.

A mix of residential, civic, education, retail, and service uses underpin a holistic community. The integration of employment opportunities with diverse residential offerings will foster a new model of development that is less car-dependent and more sustainable. Town district responds to The **Diamond City** aspirations of living in a place that will make a positive impact on the environment and lives.



Plot	Land Area	Open Area	Road Area	FPA	Parking Area	Sellable Area
MU-19	81,705 m ²	16,283 m ²		65,422 m ²	586,931 m ²	698,195 m ²
CP-05	1,056,940 m ²	965,099 m ²	161,536 m ²	97,955 m ²	161,536 m ²	173,976 m ²
X-13-04	277,085 m ²	253,770 m ²		23,315 m ²	272,123 m ²	323,708 m ²
Plot-09	433,960 m ²	236,995 m ²	82,938 m ²	180,585 m ²	781,800 m ²	1,233,982 m ²
Plot-10	433,960 m ²	301,135 m ²	105,383 m ²	125,414 m ²	871,879 m ²	2,03,258 m ²
Total	2,283,650 m ²	1,773,282 m ²	349,857 m ²	492,691 m ²	2,674,269 m ²	4,493,119 m ²

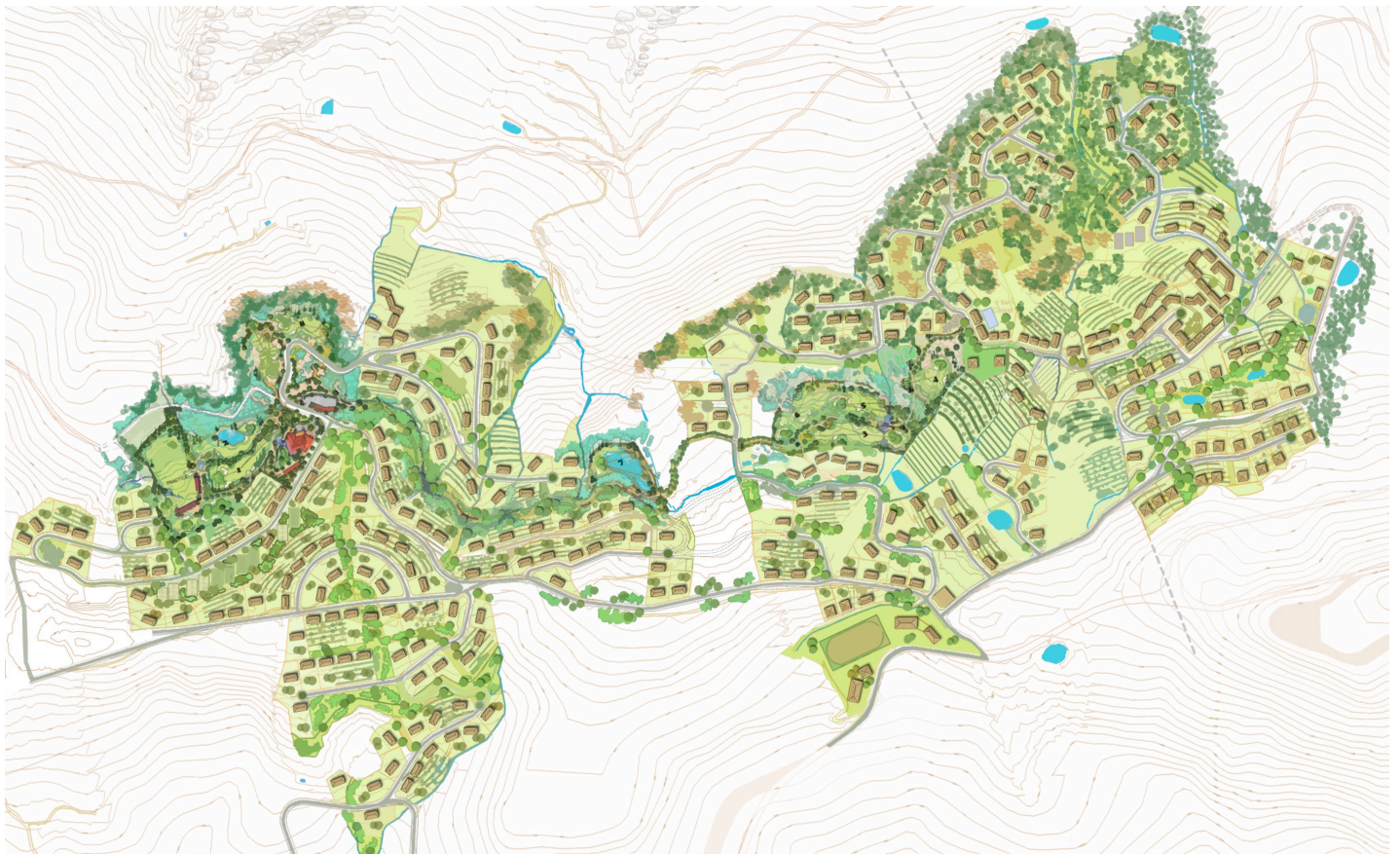
Master Planning: Ahlam Mountain Resort

We were the owner representative for a Mountain Resort Project.

The Project consists of a 1,100,000 m² land, designed to incorporate a spine embracing country club, commercial, retail and F&B activities, as well as a chapel and boutique hotel. A prime feature of the Project is a nine-hole golf course. It also includes equestrian activities that stretch across a show jumping arena throughout the resort's breathtaking scenery.

The residential real estate component will benefit from the lateral benefit of the village center spine and 100,000 m² of natural parks.

The Project built environment will be composed of various types of residences, from small to medium chalets and townhouses to detached independent villas. The built form will be directed by a set of custom designed architectonic rules and regulations that respond to the site - and Project - specific constraints in addition to several environmental and ecological considerations.



Master Planning:

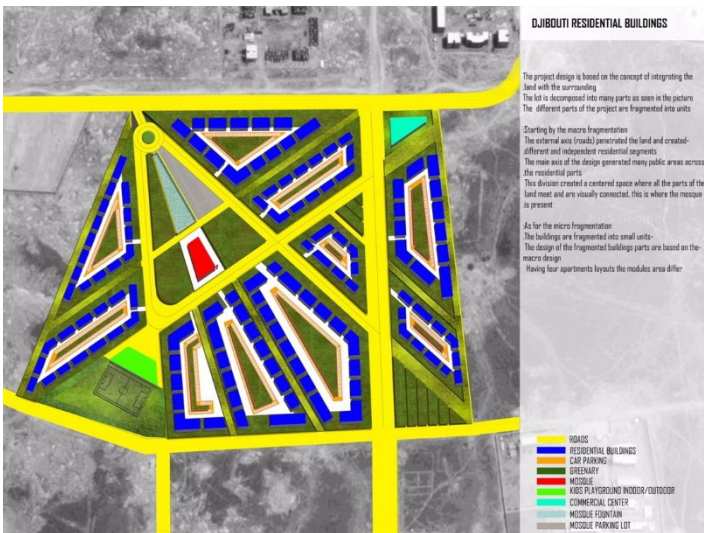
Town Complex 850,000 m² Miksé - Bekaa



Roads Design



1000 Habitations with Mosque & Commercial Area: 250,000 m² - Djibouti 2016



Master Planning: PowerLink Hoima Complex



PowerLink Hoima Complex

Leisure Club

PowerLink Hoima Complex

Gas Station

PowerLink Hoima Complex

Mall and Supermarket



Nyamasoga Facing Airport Road
40 km from Kabaale Downtown
Boueri District



BEPSCO
The Power Group

Nyamasoga Facing Airport Road
40 km from Kabaale Downtown
Boueri District



BEPSCO
The Power Group

Nyamasoga Facing Airport Road
40 km from Kabaale Downtown
Boueri District



BEPSCO
The Power Group



PowerLink Hoima Complex



PowerLink Hoima Complex



PowerLink Hoima Complex

Engineering Design & Consultancy – Project Management & Development

Lebanon | North Meten | Jal-El-Dib | Main Exit Road | Mar Aabda Street | Gebara Building | 7th Floor

Cell: +961 3 254 452 | +20 120 21 20 20 9 | +256 743 11 22 22 | +971 56 556 30 40

Tel: +961 4 740 240 | +961 4 724 241 - Mail: management@bepco-lb.com | Web: www.bepco-lb.com

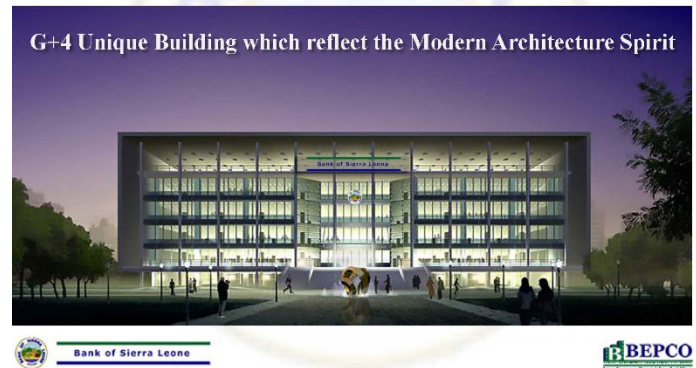
Commercial Complex: BSL Complex (Bank of Sierra Leone)

BSL - The Bank of Sierra Leone



BSL - The Bank of Sierra Leone

The Main Regional Bank Building
Exterior Preliminary Layout



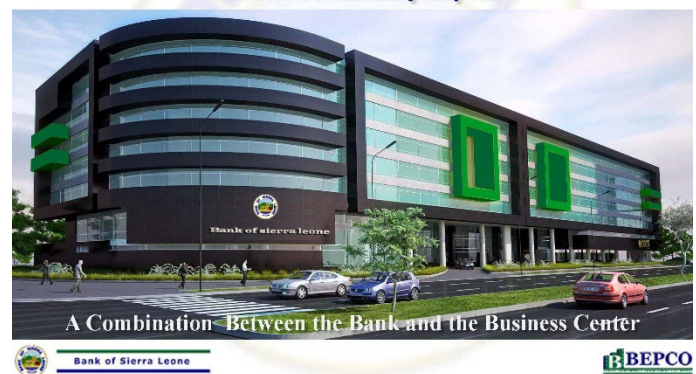
BSL - The Bank of Sierra Leone

The Business Center Building
Preliminary Exterior Layout



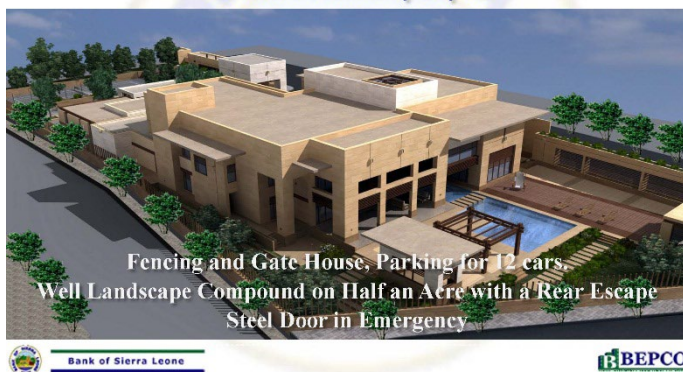
BSL - The Bank of Sierra Leone

Combined Bank | Business Building
Exterior Preliminary Layout



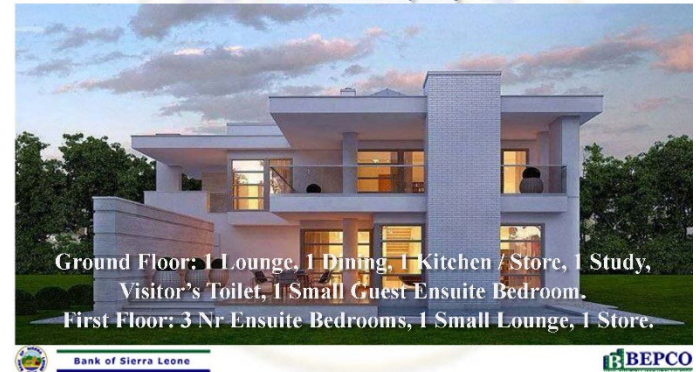
BSL - The Bank of Sierra Leone

VVIP (Very Very Important Persons) Villa
Exterior Preliminary Layout

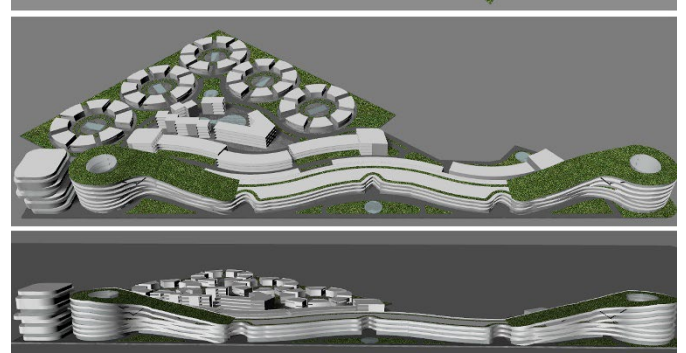
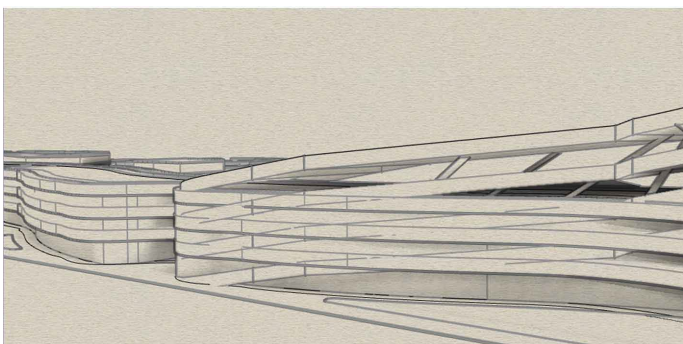
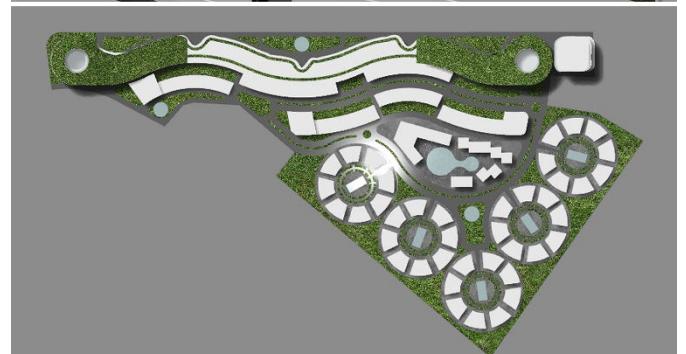
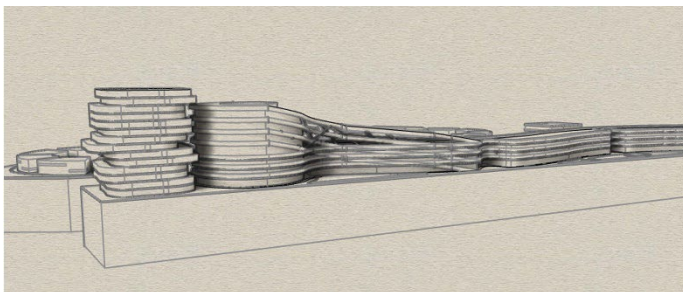
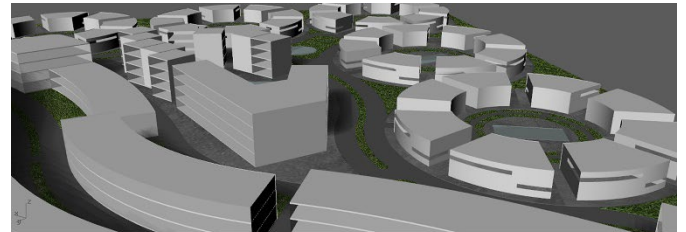
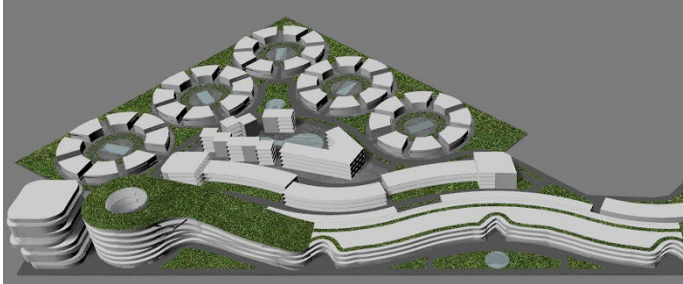


BSL - The Bank of Sierra Leone

Guest Villas
Exterior Preliminary Layout



Habitation and Commercial Complex 100,000 m²: Djibouti 2015



Exhibition Complex

DAFTEC

Dibba Al
Fujairah Trade
& Exhibition
Center



Warehouse Complex

GIFCO

Juba
South Sudan



Commercial Complex

The Emporium



Commercial Complex

Jounieh Pearl



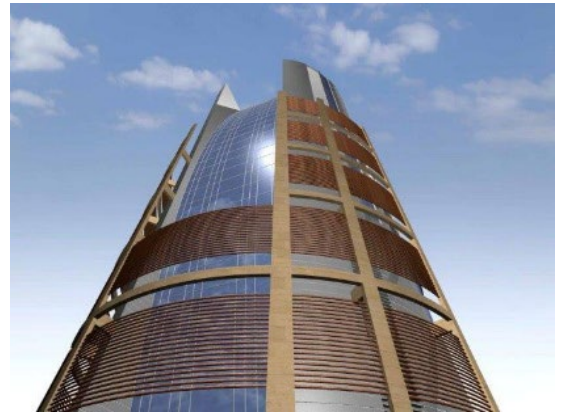
Commercial Center Jounieh



Commercial Complex

Diplomatic
Complex

Sanaa Yemen



Commercial Complex

Old City Souk

Damas



Commercial Center

Tyr



Commercial Complex

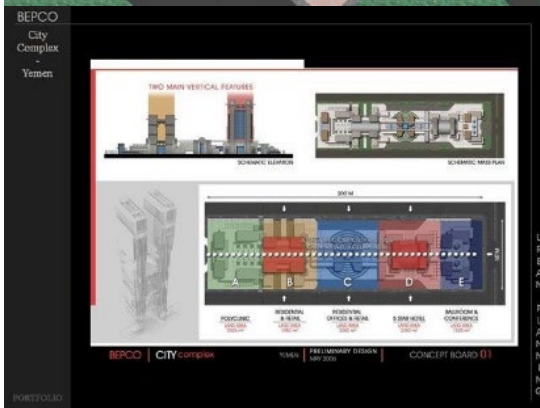
Hedda gate

Yemen



Sanaa 60
Complex

Yemen



Touristic
Complex

El Aroussa

Aden - Yemen



Commercial Complex

Rabieh City

Rabieh



Public Space

Sport Park



Public Space

Al Maha
Placette

Bahrain



Desert Park

Bahrain



Oil Stations

Orient Queen
Station

Hlaliyeh



Hotels & Resorts

Motel & Resort

Lebanon



**Orient Queen
Hotel**



Daher Motel

Lebanon



Hotels & Resorts

Murex Hotel

Tyr



Fakih Hotel
Entrance

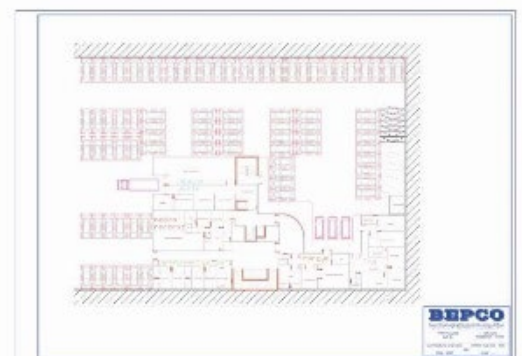
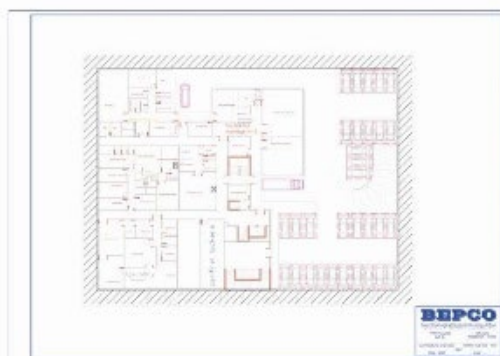
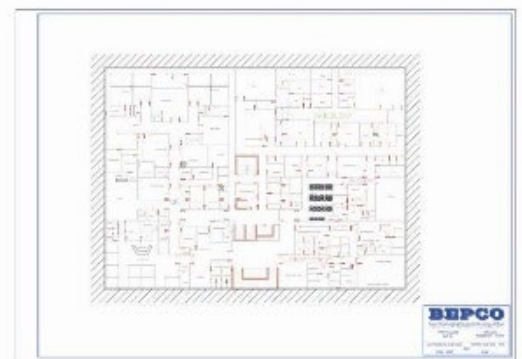
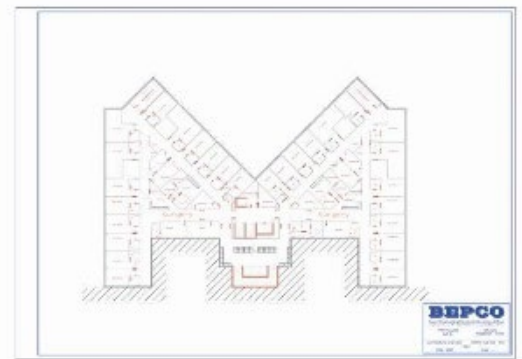
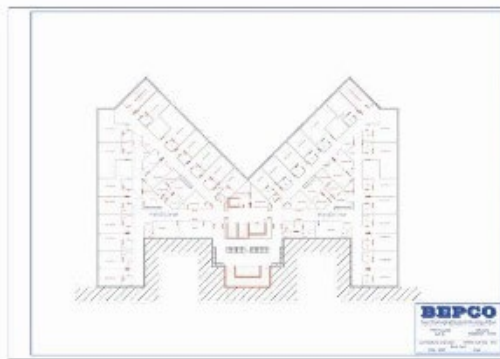
Qatar



Hospitals

MHM Hospital

Maldalyoun

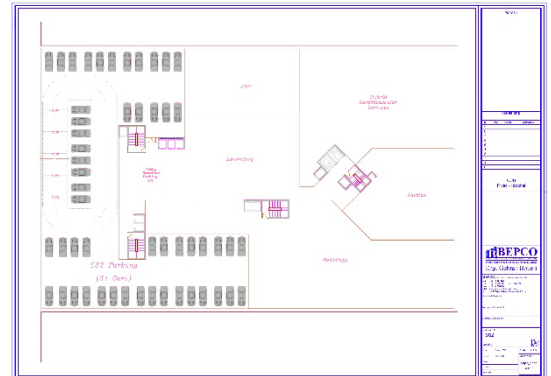
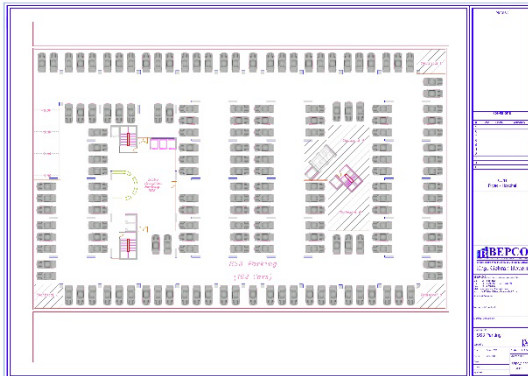
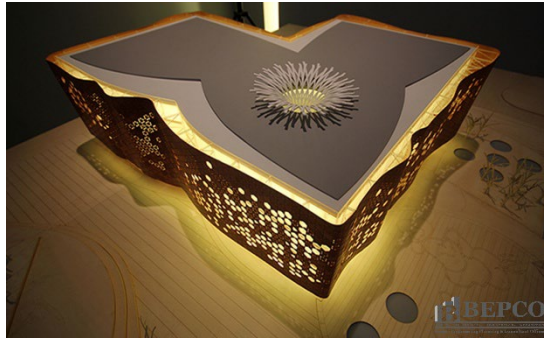


Hospitals

MEHH Hospital

Riyadh

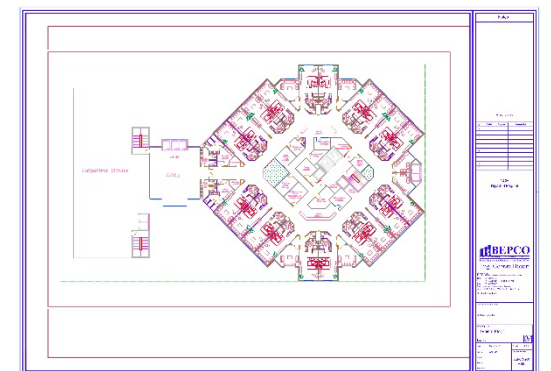
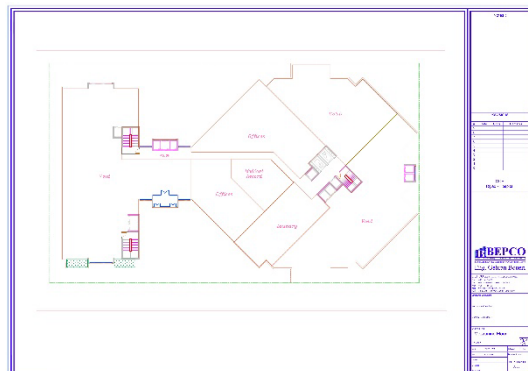
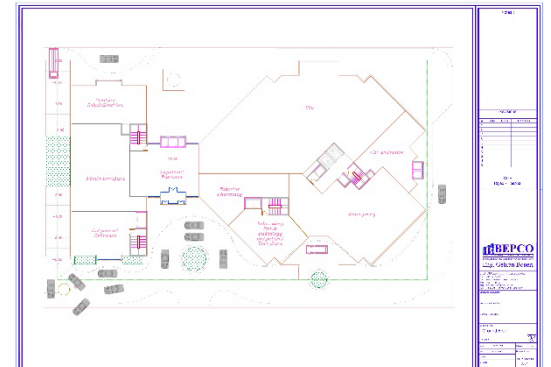
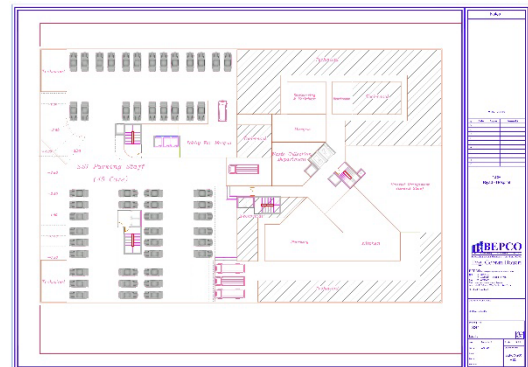
Preliminary
Idea for Design
Option 1



MEHH Hospital

Riyadh

Preliminary
Drawings
Option 2



Commercial Other

Servika
Warehouses

Dbayeh



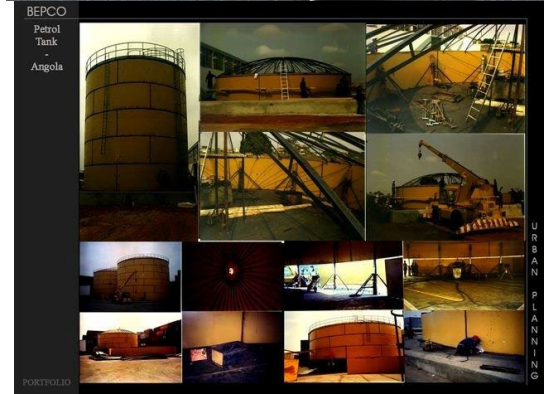
Parking
Building

Achrafieh



Huge Oil Tank

Angola



Offices Buildings

Offices Tower
Dbayeh 529



Offices Tower
Bachoura 01



Office Tower
Kasr El Helou
Hallab Tower
Tripoly



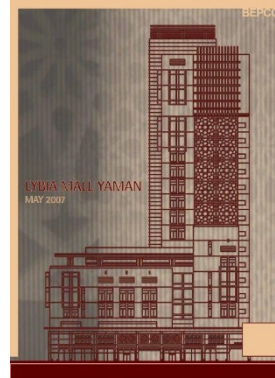
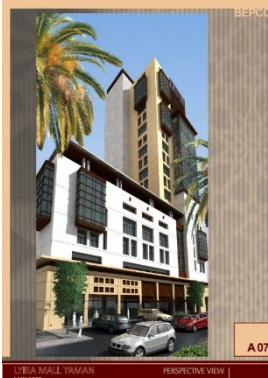
Office Building
Hadramout
Yemen



Offices Buildings

Libya Mall
Offices

Yemen



Offices Tower
Bachoura 02



Kallassi Offices

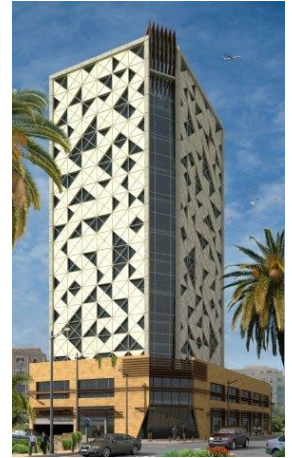
Aoukar



Offices Buildings

Offices Tower

Bachoura 03



GroupKa
Offices

Dbayeh



Dbayeh 529
Offices



Baroudy Office

Makalles



Residential Complexes



Residential
Complex

180 Apartments

40,000 m²

Salhiyeh



Residential Complexes

Residential
Complex

93 Building

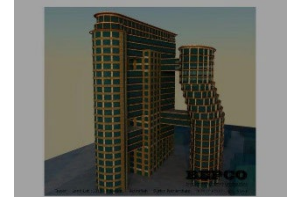
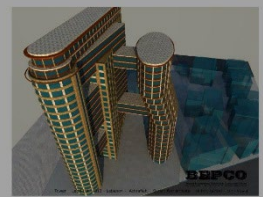
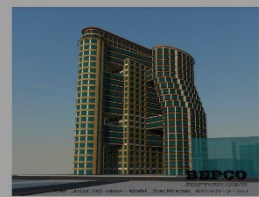
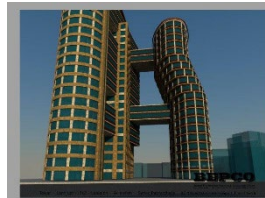
135,000 m²

Bahrain



In Progress
Offices Tower
Study

Beirut



Private Villas

Villa Matta

Ajaltoun



Villa Amil

Lebanon



Villa Aoun

Rabieh



Villa Atallah

Lebanon



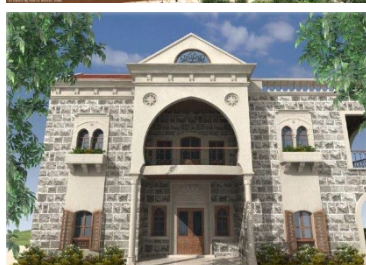
Villa Bilal

Lebanon


















Villa Chamoun

Lebanon



Private Villas

Villa Fakher El Din UAE			
Villa Faysal Ben Abdallah UAE			
Villa Fleknaze UAE			
Villa Garden House Kousba			
Villa Meneem Lebanon			
Villa Kallassi Chahtoul			

Private Villas

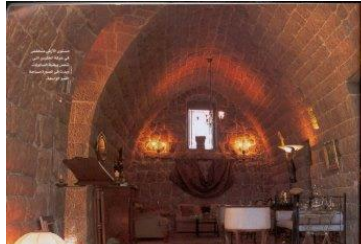
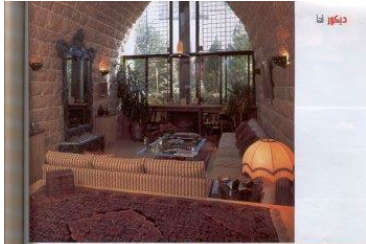
Villa Kanaan

Ain Aalak



Villa Matta

Kleiaat



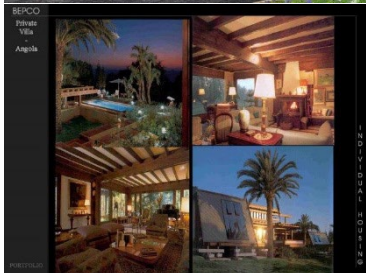
Villa Baroudi

Lebanon



Villa Angola

Intertransports
Center



Villa Complex

Irbil



Residential Buildings

Luxury Residential Building

16 Apartments of 450 m²

Aoukar



Residential Tower

Moudawar Jemayze



Residential Buildings

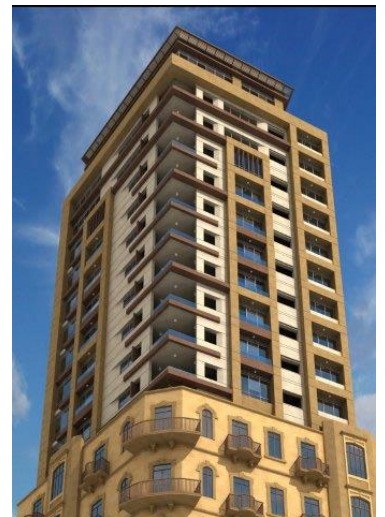
Residential
Building

St Phocas
Ghadir



Residential
Building

Saifi
Abdel Wahab



Residential
Building

Lebanon



Residential Buildings

Residential
& Commercial
Building

Achrafieh



Residential
Building

Chediak Bros

Lebanon



Residential
Building

Lebanon



Residential
Building

Cote d'Ivoire



Residential Buildings

Residential
Building

Baouchrieh



Residential
Building

Ajaltoun



Residential Buildings

Luxury
Residential
Building

Rabieh



Residential
Building

Lebanon



Residential
Building

Tannous
Building

Lebanon



Residential Buildings

Residential
Building

Lebanon



Residential
Building

Tripoly



Al Ghadir
Residential
Complex



Residential
Building

Lebanon



Residential
Building

Lebanon



Churches

Our Lady of
Rosary Church

Hrajel

First Prize :
Competition
between Three
Engineering
Firms



Churches

Engineering Design & Consultancy – Project Management & Development

Lebanon | North Meten | Jal-El-Dib | Main Exit Road | Mar Aabda Street | Gebara Building | 7th Floor

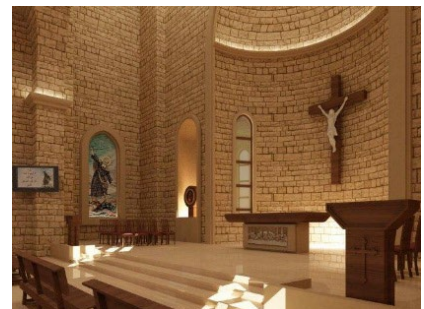
Cell: +961 3 254 452 | +20 120 21 20 20 9 | +256 743 11 22 22 | +971 56 556 30 40

Tel: +961 4 740 240 | +961 4 724 241 - Mail: management@bepco-lb.com | Web: www.bepco-lb.com

St Elias Church

Mayrouba

First Prize :
Competition
between Nine
Engineering
Firms

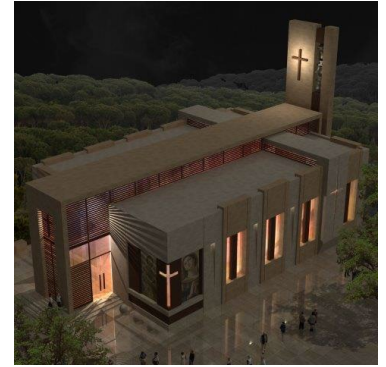


Churches

St Joseph
Church

Chahtoul

Version 1



St Joseph
Church

Chahtoul

Version 2



St Joseph
Church

Chahtoul

Version 3



Churches

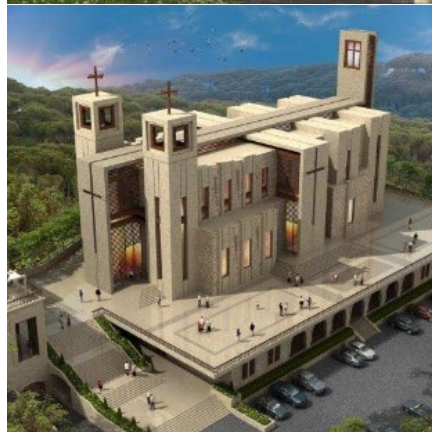
Parking &
Cemeteries

St Phocas
Ghadir



St Elias Church
Version 2

Mayrouba



Food & Beverage

Amadeus
Signature

Abu Dhabi



Press Café

Jounieh



Applebee's
Restaurant

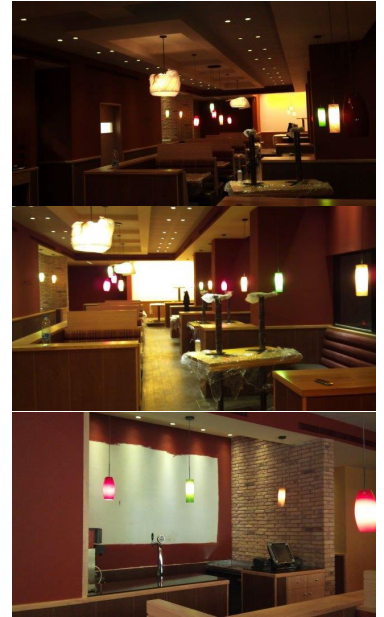
Dbayeh



Food & Beverage

Applebee's Restaurant

Beirut Hamra



Colombiano Coffee House

Abu Dhabi Marina Mall



Food & Beverage

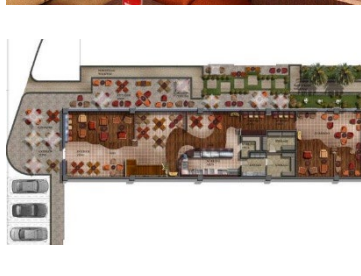
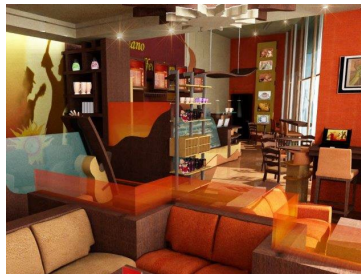
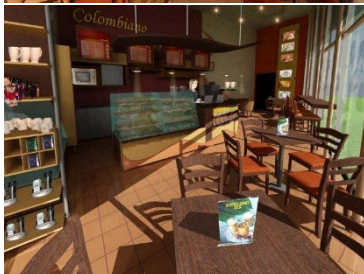
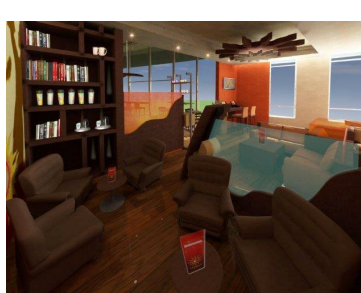
Colombiano
Coffee House

Abu Dhabi
Corniche



Colombiano
Coffee House

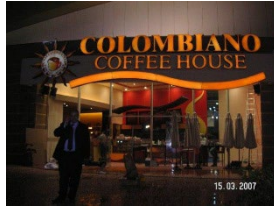
Qatar
Salwa Road



Food & Beverage

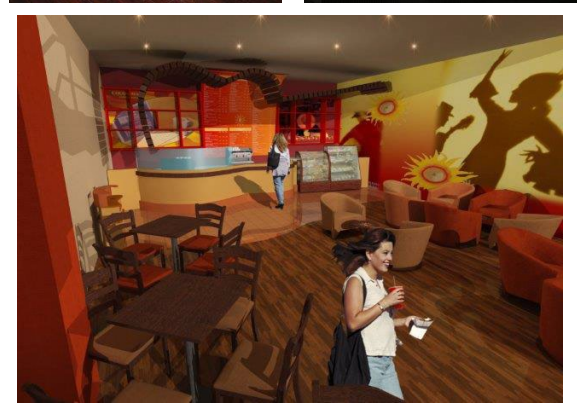
Colombiano Coffee House

Beirut
Biel



Colombiano Coffee House

Beirut
Beirut mall



Burger King Restaurant

Cyprus
Limassol



Food & Beverage

Burger King
Restaurant

Lebanon
Kaslik



Burger King
Restaurant

Lebanon
Haret Sakher



Burger King
Restaurant

Lebanon
Sour



Burger King
Restaurant

Lebanon
Elissar



Burger King
Restaurant

Lebanon
Tripoly



Burger King
Restaurant

Lebanon
Furn El
Chebbak



Food & Beverage

Engineering Design & Consultancy – Project Management & Development

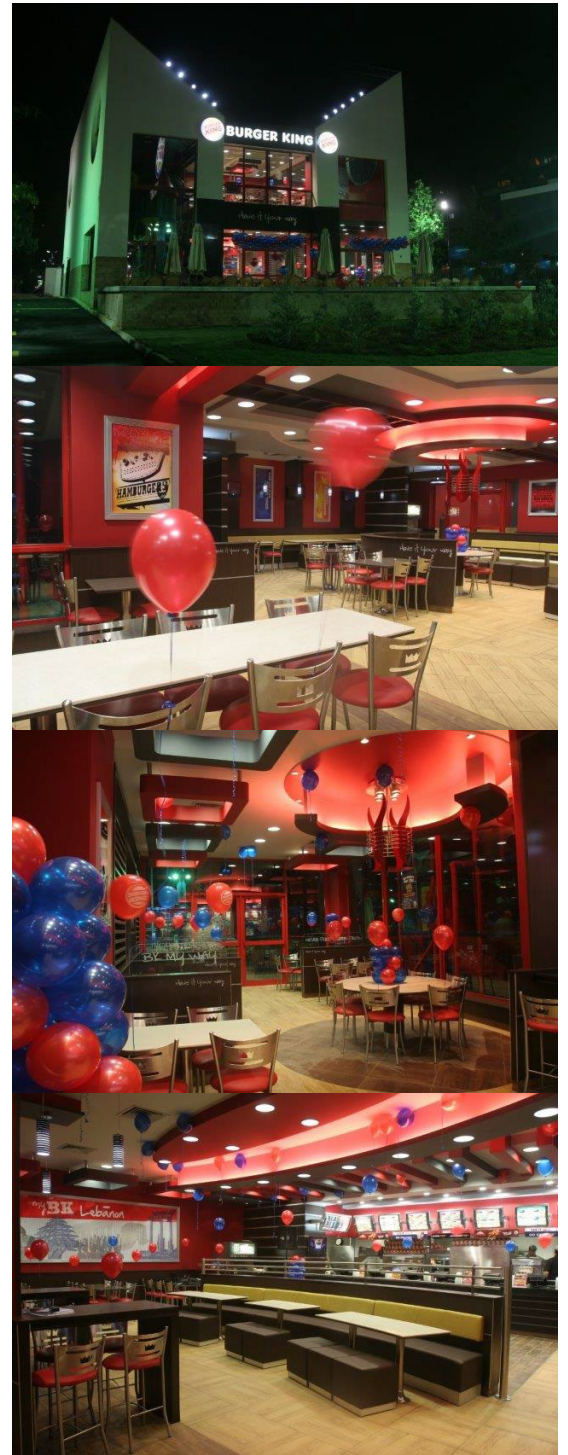
Lebanon | North Meten | Jal-El-Dib | Main Exit Road | Mar Aabda Street | Gebara Building | 7th Floor

Cell: +961 3 254 452 | +20 120 21 20 20 9 | +256 743 11 22 22 | +971 56 556 30 40

Tel: +961 4 740 240 | +961 4 724 241 - Mail: management@bepco-lb.com | Web: www.bepco-lb.com

**Burger King
Restaurant**

Lebanon
Jal El Dib



Mega Project

Diamond City	Cairo – Egypt	2020	Partner with AWWC & SCC
1000 Habitations, Mosque & Commercial Area	Djibouti - Djibouti	2016	FADES [Fonds Arabe pour le Développement Economique et Social]
Mikse Village	Bekaa - Lebanon	2015	Nassif Karam
Ahlam Mountain Resort	Kfardebian - Lebanon	2011	Kallassi & Partners
1000 Habitations with Mosque & Commercial Area	Djibouti - Djibouti	2016	FADES [Fonds Arabe pour le Développement Economique et Social]

Commercial Complex

BSL Complex	Freetown – Sierra Leone	2016	BSL
PowerLink Complex	Hoima - Uganda	2016	PLCI
DAFTEC	Dibba Al Fujairah - UAE	2016	Dr. Thani Al-Zeyoudi
The Emporium	Lebanon - Jounieh	2015	Toni Asmar
Jounieh Pearl - 31,900 m²	Lebanon - Haret Sakher	2011	GroupKa
Commercial Center	Lebanon - Beirut - Jal El Dib	2009	GroupKa
Commercial Center	Lebanon - Beirut - Achrafieh	2008	GroupKa
SCTC Commercial Project	Lebanon - Sour - Jal El Baher	2008	Sea Center sal
Lybia Mall -12,000 m²	Yemen - Sanaa	2007	Mimistre Ahamd Soufan
Diplomatic Mall - 48,000 m²	Yemen - Sanaa	2006	Yemen Economic Corporation (YECO)
Hedda gate36,000m	Yemen - Sanaa	2006	Yemen Economic Corporation (YECO)
Sanaa 60 Complex	Yemen - Sanaa	2006	Yemen Economic Corporation (YECO)
Old City Souk	Syria	2005	
Commercial Center	Lebanon - Safra	2003	Mtr Georges Fares
Commercial Complex - 35,000 m²	Lebanon - Jounieh	2000	GroupKa
Rabieh City	Lebanon - Antélias - Rabieh	2000	Mr. Freddy Chemaly

Hotels & Resorts

Fakih Hotel Entrance	Qatar	2010	
Murex Hotel	Lebanon - Tyr	2009	
AL Arousa Resort - 25,000 m²	Yemen - Aden	2008	Yemen Economic Corporation (YECO)
Orient Queen Hotel	Lebanon - Saida - Hlaliyeh	2008	AMG - Lebanon
Motel & Resort	Lebanon	2007	
Daher Motel	Lebanon	2006	
Maison de Retraite	Lebanon - Jbeil - Adonis Sannour	1998	Mar Chaaya Couvent - Maronite Antonin
"Donna Maria Playa" - 75,000m² Beach Resort	Lebanon - Maameltein	1987	Mr. Edmond Chaghoury

Hospitals

MEHH Hospital	Kingdom of Saudi Arabia	2014	Middle East Medical Hospital
Hospital MHM & Nursery School	Lebanon - Saida - 9 Majdalioun	2009	AMG - Lebanon
Hospital Renew & Extending	Lebanon - Tripoli - 4002 Bsatine	2008	Hospital Nini
Hospital Feasibility Study	Lebanon - Sin El Fil - Hospital Hayek	2004	Dr Georges Hayek

Residential Complexes

Residential City	Djibouti - Djibouti	2016	Yacin Aouled
El Kallassi Apartments	Lebanon - Dbayeh - Aoukar	2012	El Kallassi Brothers
Faytroun 2467 – 18,500m ²	Lebanon - Faytroun	2012	GroupKa
Residential Complexes	Lebanon - Ghadir - Jounieh	2011	Wakef Mar Fawka
Residential Complex - 180 Apartments - 40,000 m ²	Lebanon - Salhiyeh	2010	AMG
Residential Complex - 93 Building - 135,000 m ²	Bahrain	2008	
Residential Complex	Lebanon - Sarba - Jounieh	2006	Mr. Nabil kamar
Residential Complex “ La Pergola”	Lebanon - Adma	1999	STIM sal
Bhamdoun 1670	Lebanon - Bhamdoun	1998	Mr. Mahmoud Chaalan
High Grade Residential Complex	Lebanon - Dhour Abadiyeh	1998	Developers Group sal
AL Ghadir Centre 12,000m ² Apartments	Lebanon - Ghadir - Jounieh	1995	Youness & Boueri
Residential Complex, 3 bldg. 48 apartments	Lebanon - Adonis - Keserwan	1986	Mr. Joseph Stephane
4 Residential Building	Lebanon - Fanar	1982	Mr. Joseph Khoury

Factories

GIFCO Warehouses	South Sudan - Juba	2016	GIFCO
ServiKa Warehouses 18,000 m ²	Lebanon - Dbayeh - Aoukar	2010	Servika sal
El Kaser Tower	Lebanon - Bsatine - Tripoli 3648 Bsatine	2008	Mr. Samer El Hallab
Biding Factory - Reliure	Lebanon - Bourj Brajne 2862	2006	Mr. Fouad El Beaino
Paper Factory 5,000 m ²	Lebanon - Daraoun - Harissa 83	1998	Bassil Frères
Italian Rubinetterie Factory	Lebanon - 747 Blat - Mastita Jbeil	1995	Rubinetterie Italibanaise sal
Chain of Production of Precast PPB Beams	Lebanon - Halat	1988	Structure sal

Offices Buildings

BSL Bank	Sierra Leone - Makeni	2016	Central Bank od SL
Offices Center 01			
Offices Center 02	Lebanon – Dbayeh	2012	Kallassi Brothers
Offices Center 03			
In Progress Offices Tower	Lebanon - Beirut - Achrafieh	2011	Patriarchate of Syriac Catholics
Baroudy Office	Lebanon - Mkalless	2010	Baroudy Group
Offices Renovation	Lebanon - 454 Dbayeh - Aoukar	2009	GroupKa
Independence Tower 01			
Independence Tower 02	Lebanon - Bachoura	2009	B. Kallassi & N. Berri
Independence Tower 03			
Kasr El Helou Offices	Lebanon - Bsatine - Tripoli	2008	Mr. Samer El Hallab
Offices Tower	Yemen - Hadramout	2007	Yemen Economic Corporation (YECO)
Bourse Offices	Lebanon - Jounieh	2006	Credit Financier

Private Villas

VVIP Villa	Sierra Leone - Makeni	2016	Central Bank od SL
Two Individual Villas	Sierra Leone - Makeni	2016	Central Bank od SL
Villa Boueri	Lebanon - Rabweh	2012	Boueri's Family
Villa Chamoun	Lebanon	2011	
Villa Kallassi	Lebanon - Chahtoul	2010	Mr. Bechara Kallassi
Villa Hayel	Yemen - Aden	2009	Mr. Rashad Hayel
Villa Kanaan	Lebanon - Ain Aalak	2009	Mr. Fadi Kanaan
Villa Bilal	Lebanon	2008	
Villa Fakher El Din	UAE	2008	
Villa Faysal Ben Abdullah	UAE	2007	
Villa Meneem	Lebanon	2007	
Villa Fleknaze	UAE	2006	
Villa Complex	Irbil	2005	
Villa Garden House	Lebanon - Kousba	2005	Mr. Samir Bou Khalil
Villa Atallah	Lebanon	2003	
Villa Diplomatic	Angola	2002	Intertransports Center
Villa Aoun	Lebanon - Rabieh	1999	Mr. Joseph Aoun
Villa Feghali	Lebanon - Wadi Chahrour	1999	Mr. Nazih Feghali
Villa Baroudi	Lebanon	1998	
Villa Amil	Lebanon	1997	
Villa Matta	Lebanon - Kleiaat	1996	Mr. Antoine Matta

Residential Buildings

Residential Building	Lebanon - Fatqua	2021	Selim Saade
Residential Building	Lebanon - Ajaltoun	2017	Fadi Boueri
Luxury Residential Building	Lebanon - Rabieh	2014	Nagi Abdo
Residential Building	Lebanon - Majzoub	2014	Nagi Abdo
Saifi 92	Lebanon - Abdel Wahab	2010	GroupKA
El Kaser Building	Lebanon - Bsatine - Tripoli	2008	El Hallab Brothers
Gemayze Tower	Lebanon - Gemayzeh - Beirut	2008	Kallassi Group
Residential Building 507	Lebanon - Achrafieh	2008	Kallassi Group
Furnished Apartments	Lebanon - Chalimar	2007	Mr. Elie Saber
Residential Building	Cote d'Ivoire - Yamoussoukro	2007	
Apartments	Lebanon - Cornet El Hamra	2006	Dr. Paul Abdo
Residential & Commercial	Lebanon	2006	
Chidiac Building	Lebanon	2005	Chediak Bros
Residential Building	Lebanon	2004	
Private Apartment	Lebanon - Ghadir	2004	Roland Chalfoun
Residential Building	Lebanon	2004	
Residential Building	Lebanon	2003	
Private Apartment	Lebanon – Dick El Mehdi	2002	Boueri's Family
Residential Building	Lebanon	2002	
Residential Building	Lebanon	2001	
Complexe Residentiel	Lebanon - Bhamdoun	1999	Developeppers Group sal
Tannous Building	Lebanon	1998	
High Grade Residence Building	Lebanon - Adma - Defneh	1998	616 Adma
High Grade Residential Building	Lebanon - Ajaltoun	1998	Mr. Antoine Matta
Residential Building	Lebanon - Kleiaat	1998	Mr. Roukoz Boueri
Residential Building	Lebanon - Sarba	1998	Mr. Fadi Matar
Residential Building 616	Lebanon - Adma	1996	Doctors' Group
Residence Building	Lebanon - Jounieh	1994	Mr. Fadi Matar
Residence Building	Lebanon - Mastita - Halat	1993	Mr. Eugene Khoury
Residence Complex	Lebanon - Laklouk	1992	Mr. Eugene Khoury
Residential Building	Lebanon - Jounieh	1992	Mr. Chawki Obeid
Residential Building	Lebanon - Mansourieh	1991	Mr. Fares Naser
High Grade Residential Building	Lebanon - Ain Saade	1990	Mr. Loutfi Azar
High Grade Residential Building	Lebanon - Rabieh	1990	Mr. Joseph Youness
Residential Building	Lebanon - Bkak El Dine	1988	Mr. Georges Gemayel

Churches

Our Lady of Rosary Church	Lebanon - Keserwan - Hrajel	2020	Wakef El-Saydeh
First Prize : Competition between Three Engineering Firms			
St Elias Church 01	Lebanon - Keserwan - Mayrouba	2013	Wakef Mar Elias
St Elias Church 02			
First Prize : Competition between Nine Engineering Firms			
St Joseph Church 01	Lebanon - Keserwan - Chahtoul	2012	Wakef Mar Youssef
St Joseph Church 02			
St Joseph Church 03			
St Phocas Parking & Cemeteries	Lebanon - Keserwan - Jounieh - Ghadir	2011	Wakef Mar Fawka
Mar Elias Church Halls, & Annexes	Lebanon - Mayrouba	1990	Wakef Mar Elias
Mar Fawka Church Extension, Hall & Annex	Lebanon - Keserwan - Jounieh - Ghadir	1989	Wakef Mar Fawka

Public Spaces

Private Parking & Sport Club	Lebanon - Jounieh	2014	Municipality & Wakef
Sport Park	Lebanon - Zouk	2006	GroupKa
Al Maha Placette	Bahrain	2005	
Desert Park	Bahrain	2004	

Oil Tanks & Oil Stations

Orient Station	Lebanon - Hlaliyeh - Saida	2009	AMG - Lebanon
Mobile Filling Petrol Station "Sonoil"	Angola	2003	Intertransport Center - Italy
Petrol Tanks 18,000 m ³	Angola	2003	Intertransport Center - Italy

Miscellaneous Projects

Ifraz Lots -58-89-90	Lebanon - Adma	2012	Daher & Kallassi
Ifraz Lots 24-25-50	Lebanon - Chahtoul	2009	Kallassi Group
Public Parking Building	Lebanon - Achrafieh 632	2007	Mr. Elie Saber
PPB System - SARET	France - Avignon	1984	PPB Liban
Port Marine Work	Lebanon - Beirut Port	1983	Mr. Joseph Khoury
Yacht Marine Work	Lebanon - Halat	1983	Mr. Joseph Khoury
Coast Road Work	Lebanon - Tabarja - Jbeil	1982	Mr. Joseph Khoury

Food & Beverage

Burger King Restaurant	Lebanon - Bliss	2014	King Food sal
Burger King Restaurant	Lebanon - Aley – Aley Mall	2014	King Food sal
Burger King Restaurant	Lebanon - Saida - Saida Mall	2013	King Food sal
Burger King Restaurant	Lebanon - Jounieh - Maameltein	2012	King Food sal
Burger King Restaurant	Lebanon - Zahle	2012	King Food sal
Burger King Restaurant	Lebanon - City Center - Baabda	2011	King Food sal
Burger King Restaurant	Lebanon - Nabatieh	2011	King Food sal
Burger King Restaurant	Lebanon - Furn El Chebbak	2011	King Food sal
Burger King Restaurant	Lebanon - Jal EL Dib	2010	King Food sal
Burger King Restaurant	Lebanon - Mazraet Yachou	2010	King Food sal
Burger King Restaurant	Lebanon - Moucharafieh	2010	King Food sal
Burger King Restaurant	Lebanon - Harissa - Téléférique	2009	King Food sal
Burger King Restaurant	Lebanon - Hazmiyeh	2009	King Food sal
Burger King Restaurant	Lebanon - Le Mall - Habtour	2009	King Food sal
Burger King Restaurant	Lebanon - Mansourieh	2009	King Food sal
Burger King Restaurant	Lebanon - Mastita - Halat	2009	King Food sal
Burger King Restaurant	Lebanon - Saida - Dorkoman	2009	King Food sal
Burger King Restaurant	Lebanon - Sour - Jal El Baher	2009	King Food sal
Burger King Restaurant	Lebanon - Tripoly - Bsatine	2009	King Food sal
Burger King Restaurant	Lebanon - TSC - Jnah - Beirut	2009	King Food sal
Burger King Restaurant	Lebanon - Zouk Mosbeh	2009	King Food sal
Burger King Restaurant	Lebanon - Saida - Hlaliyeh	2008	King Food sal
Burger King Restaurant	Lebanon - Baouchrieh	2007	King Food sal
Burger King Restaurant	Lebanon - Haret sakher	2007	King Food sal
Burger King Restaurant	Lebanon - Tripoly-Bsatine Square	2007	King Food sal
Burger King Restaurant	Lebanon - Unesco	2007	King Food sal
Burger King Restaurant	Lebanon - Beirut - Jnah TSC	2006	King Food sal
Burger King Restaurant	Lebanon - Saloumi	2005	King Food sal
Burger King Restaurant	Lebanon - Hamra - Elyssar	2004	King Food sal
Burger King Restaurant	Lebanon - Monot	2004	King Food sal
Burger King Restaurant	Lebanon - Spinneys Jnah	2004	King Food sal
Burger King Restaurant	Lebanon - Spinneys Saida	2004	King Food sal
Burger King Restaurant	Lebanon - Spinneys Tripoly	2004	King Food sal
Burger King Restaurant	Lebanon - Achrafieh - ABC	2003	King Food sal
Burger King Restaurant	Lebanon - Aley - MAF Mall	2002	King Food sal
Burger King Restaurant	Lebanon - Spineys - Dbayeh	2002	King Food sal
Burger King Restaurant	Lebanon - Hamra - Main Gate	2001	King Food sal
Burger King Restaurant	Lebanon - Kaslik	2001	King Food sal
Burger King Restaurant	Lebanon - Spineys - Achrafieh	2001	King Food sal
Burger King Restaurant	Lebanon - Beirut - Raouche	2000	King Food sal

Food & Beverage

Engineering Design & Consultancy – Project Management & Development

Lebanon | North Meten | Jal-El-Dib | Main Exit Road | Mar Aabda Street | Gebara Building | 7th Floor

Cell: +961 3 254 452 | +20 120 21 20 20 9 | +256 743 11 22 22 | +971 56 556 30 40

Tel: +961 4 740 240 | +961 4 724 241 - Mail: management@bepco-lb.com | Web: www.bepco-lb.com

Burger King Restaurant	Cyprus - Protaras	2005	King Franchises Ltd
Burger King Restaurant	Cyprus - Nicosia DT	2004	King Franchises Ltd
Burger King Restaurant	Cyprus - Ayanapa	2003	King Franchises Ltd
Burger King Restaurant	Cyprus - Limassol DT	2003	King Franchises Ltd
Burger King Restaurant	Cyprus - Nicosia	2003	King Franchises Ltd
Burger King Restaurant	Cyprus - Limassol	2002	King Franchises Ltd
Applebee's Restaurant	Lebanon - Hamra	2011	Dine In sal
Applebee's Restaurant	Lebanon - Sin El Fill	2009	Dine In sal
Applebee's Restaurant	Lebanon - Beirut - Solidere	2009	Dine In sal
Applebee's Restaurant	Lebanon - Beirut - Saifi	2008	Dine In sal
Applebee's Restaurant	Lebanon - Beirut - Unesco	2007	Dine In sal
Applebee's Restaurant	Lebanon - Dbayeh High Way	2005	Dine In sal
Colombiano Coffee House	Lebanon - Bhamdoun	2008	CMS sal
Colombiano Coffee House	Lebanon - Hamra	2008	CMS sal
Colombiano Coffee House	Lebanon - Baouchrieh	2007	CMS sal
Colombiano Coffee House	Lebanon - Jeita - Aoun Market	2007	CMS sal
Colombiano Coffee House	Abu Dhabi - Corniche	2007	Sicilia
Colombiano Coffee House	Lebanon - Achrafieh	2007	CMS sal
Colombiano Coffee House	Qatar - Salwa Road	2007	Al Diyar Al Quataria
Colombiano Coffee House	Abu Dhabi - Marina Tower	2007	Sicilia
Colombiano Coffee House	Abu Dhabi - Marina Mall	2007	Sicilia
Colombiano Coffee House	Lebanon - Beirut Mall	2006	CMS sal
Colombiano Coffee House	Lebanon - Biel	2006	CMS sal
Colombiano Coffee House	Lebanon - Sin El Fil - Le Mall	2005	CMS sal
ZWZ Offices & Kitchen	Lebanon - Jdeideh	2009	Breakfast & Co. sal
ZWZ Restaurant	Lebanon - Kaslik	2009	Breakfast & Co. sal
ZWZ Restaurant	Lebanon - Jal El Dib	2009	Breakfast & Co. sal
Amadeus Restaurant	Abu Dhabi - Marina Tower	2007	Sicilia
Mr Brown Restaurant	Lebanon - Adonis	2004	Choufani Bros.
Italian Restaurant	Lebanon - Down Town	2003	Lahoud & Zantout
Broasted Deli Restaurant	Lebanon - Zalka	2003	Broasted Deli